



## **Why Choose Netservers Private xDSL?**

Netservers have a major competitive advantage over our rivals.

Our in-house developers have created an xDSL platform with fully integrated support for private routing domains.

This platform enables us to create per-customer private routing domains without having to purchase additional hardware or software licenses. Consequently, our set-up times are faster and our costs are lower than the competition.

This platform also gives unrivalled stability and rich diagnostic information that guarantees our customers the highest levels of service

## **What is Private ADSL / SDSL?**

ADSL and SDSL (collectively xDSL) connections normally provide Internet connectivity. With Private xDSL, connectivity the Internet is optional. Each line is primarily connected to a private routing domain or "cloud", not the Internet.

The objective of Private xDSL is to provide a superior replacement for traditional IPSEC/PPTP VPNs. Because these traditional VPN solutions are designed to work over the public Internet, they are by necessity complex. This complexity is what makes them unreliable and difficult to manage.

Private xDSL by contrast is far less complex, simply because the data between sites does not traverse the Internet. Instead traffic is passed directly between sites via the private routing cloud.

Unlike IPSEC, there is no need to configure a mesh of tunnels between sites. Each site connects to the cloud, which in turn gives that site access to all other sites within the cloud. With Private xDSL, configuring routers at each site becomes a trivial matter.

Because each Netservers customer operates within their own private "cloud" (or routing domain), they are free to use whatever private IP addresses they wish over their xDSL lines. This includes IP ranges such as 192.168.0.0/24 etc. (RFC1918).

## **What about Internet access?**

Most (but not all) of our customers also want to connect to the Internet. This can be done in a variety of ways. The router at each site can be issued with a public IP address that is permitted onto the internet.

Alternatively, a single Internet gateway can be added to the private network either at one site (e.g. your HQ), or in our London co-location facility. This will enable you to operate a single firewall/content filter for your entire network.

# Features and Benefits of Netserver Private xDSL

## Features

Private Routing Domain managed centrally by Netserver

No need for complex VPN protocols

Any IP addresses can be routed over the network.

Compatible with any BT line where SDSL, ADSL and ADSL Max available.

Compatible with Netserver Leased Lines

Leased lines with line speeds from 2Mbit/sec to 100Mbit/sec are available

Co-location facilities available in London Datacenters

## Benefits

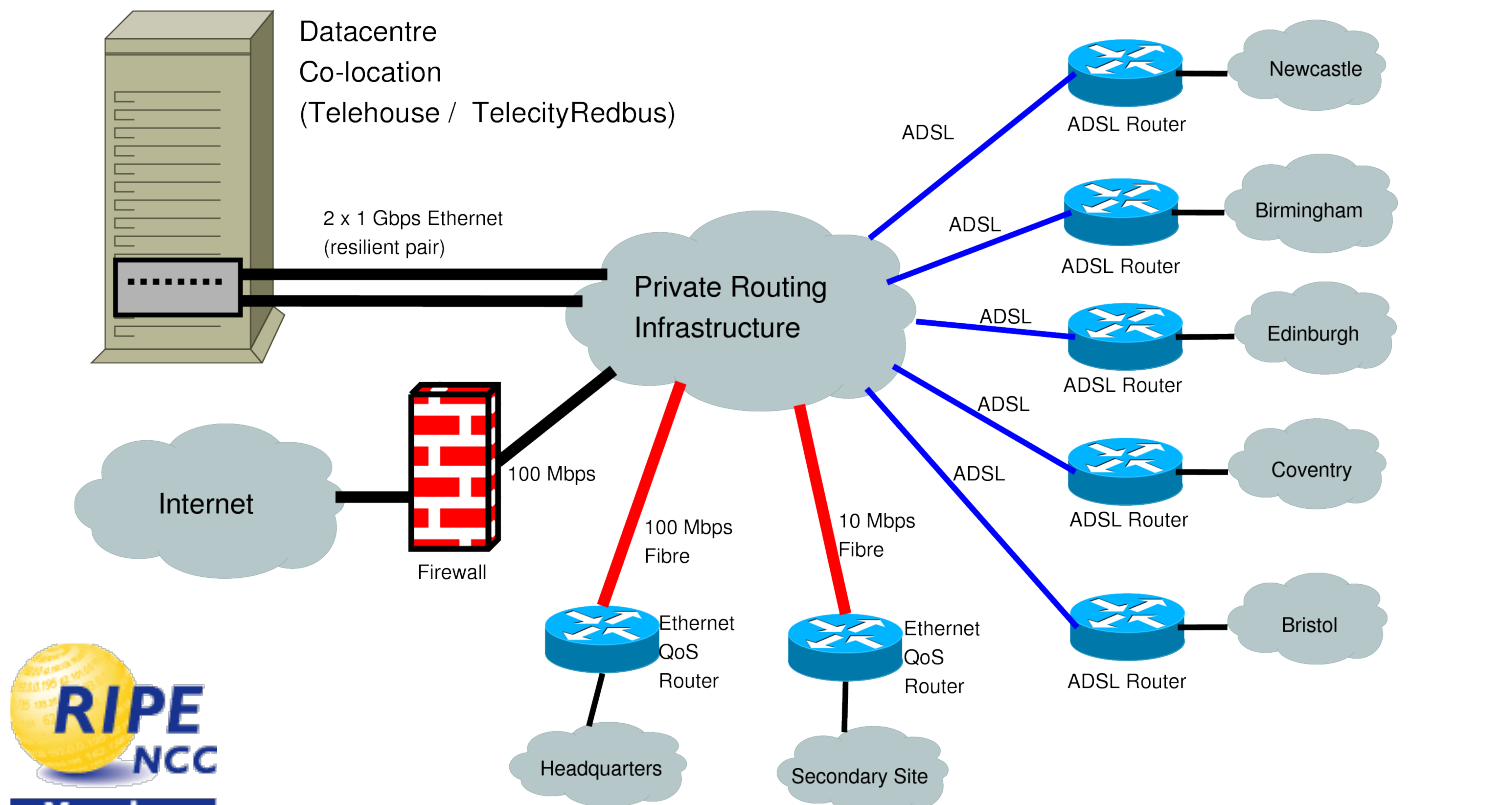
Router configurations are simple, because complex routing and VPN configurations are handled centrally by Netserver

Subnets used at existing sites can immediately be used over a Private xDSL network. No IP address renumbering is necessary.

Low set-up cost. Existing ADSL lines can be quickly migrated to operate as Private ADSL lines. Easy installation for Teleworkers.

High bandwidth sites such as the organisation's HQ can be linked into the Private Network over a leased line.

File servers, Mail servers, Terminal Servers or any other system can be connected directly to the heart of the xDSL WAN.



**Cambridge:**  
**London:**  
**Email:**

**01223 576516**  
**0207 0439180**  
**[sales@netservers.co.uk](mailto:sales@netservers.co.uk)**

 **netserver**  
<http://www.netservers.co.uk>